

Polyline conveying

product transport system for automated production lines



Key Features

- **QUALITY DESIGN**
- **MODULAIR**
- **CLEVER HANDLING**
- **FIT FOR MANY PRODUCTS**

(CARTONS, BOTTLES: GLASS, PET, PE, SHRINK-WRAPPED PRODUCTS (MULTIPACKS), CARDBOARD BOXES, TINS AND FLASKS, BLISTER PACKS AND SACHETS, AEROSOL CANS)

Product description:

Polyline Conveying is a high quality conveying system designed to optimize internal product transport in high-end production areas.

Specifications*:

Length	500 – 3.000 mm. modules
Frame	Stainless steel, HMPE, Hygienic Design
Hight	From 200mm. up to 1.400mm. in steps of 100, or suspended
Width	3¼ - up to 12" (83 – 304mm.)
Chain	Modular slat band chain
Side guiding	Stainless bars, flat plating, or plastic profiles
Max. Speed	Up to 90m/min
Product Shapes	Round, square, rectangular, odd formed cartons, bottles, PET, etc.
Motor drive	DOL-, or frequency driven
Controls	Stand alone design /-controls, or line controlled

* Other executions on demand

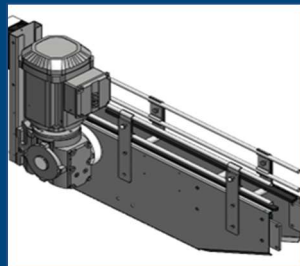
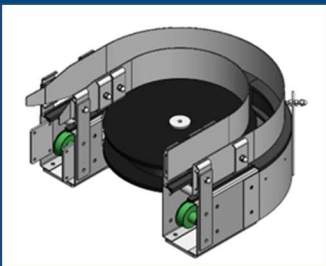
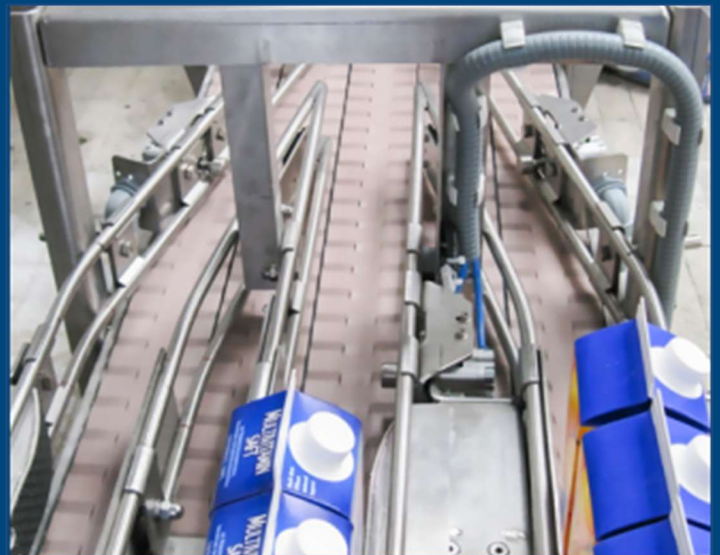
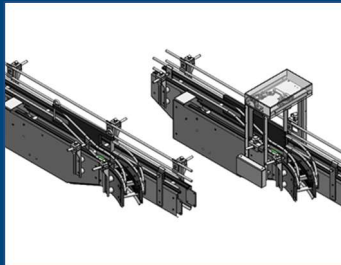
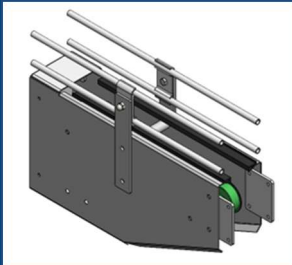
Contact & More Information:

- 2D / 3D symbols
- Technical advice & layout
- Parts & Service
- Additional options
- Budget & quotation



Polyline conveying

product transport system for automated production lines



More Performance in your Operation:

- Straight, sliding bend and curved sections
- 15 / 30 / 45 / 60 / 90 / 180°
- Switch, or merge sections
- Declining and inclining sections
- Driver- and intermediate sections
- End sections
- Automation options, as sensors, cleaning, and so on
- Conveyor covers, or enclosures

Complementary products:

- | | |
|-------------------------|---|
| - Reject unit | Immediate reject of waste or disapproved products |
| - Dosing unit | Correct dosing / spacing of products for next handling, like labelling |
| - Turning unit | Turning packages 90, or 180° for labelling, or packaging |
| - Buffer lines | In- and outliners, mass buffer tables, dynamic FIFO accumulation |
| - Functional connecting | With filler stations, packaging-, capping-, labelling-, shrink-, sorting-, freezing- or pallet stations, etc. |

Contact & More Information:

- 2D / 3D symbols
- Technical advice & layout
- Parts & Service
- Additional options
- Budget & quotation

